

- Privately held corporation that is owned by British Columbia Investment Management Corporation (BCI) who has access to a significant pool of capital for utility infrastructure investment
- Governed by a public-style board of directors that includes representatives from BCI, Corix, and external independent directors
- Leading provider of sustainable water, wastewater, and district energy, serving small-to-medium local utility infrastructure through regulated utility and contract (non-regulated) utility business models

## Quick Facts

Over 1,300 systems in North America

Servicing 1 million people

Water treatment (337 systems)

Water distribution (402 systems)

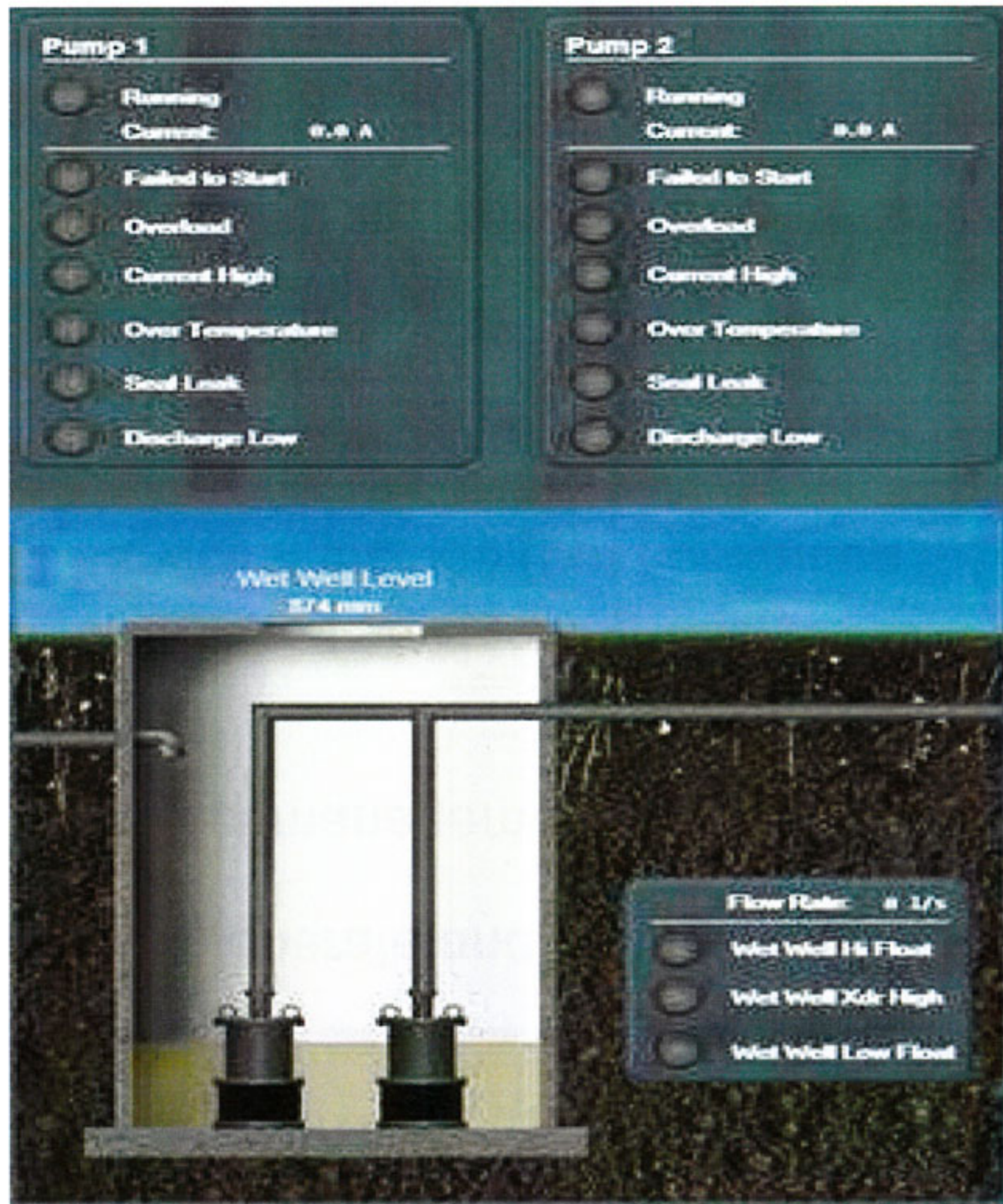
Wastewater treatment (289 systems)

Wastewater collection (311 systems)

Energy systems (20 systems)

- Own, operate and maintain utilities.
- Project management for design and build.
- Water and wastewater utility services, include (but not limited to):
  - ✓ commissioning,
  - ✓ monitoring
  - ✓ cleaning,
  - ✓ testing and disinfecting water mains,
  - ✓ leak detection,
  - ✓ fire hydrant testing and repair
  - ✓ reservoir cleaning and disinfecting
  - ✓ customer care

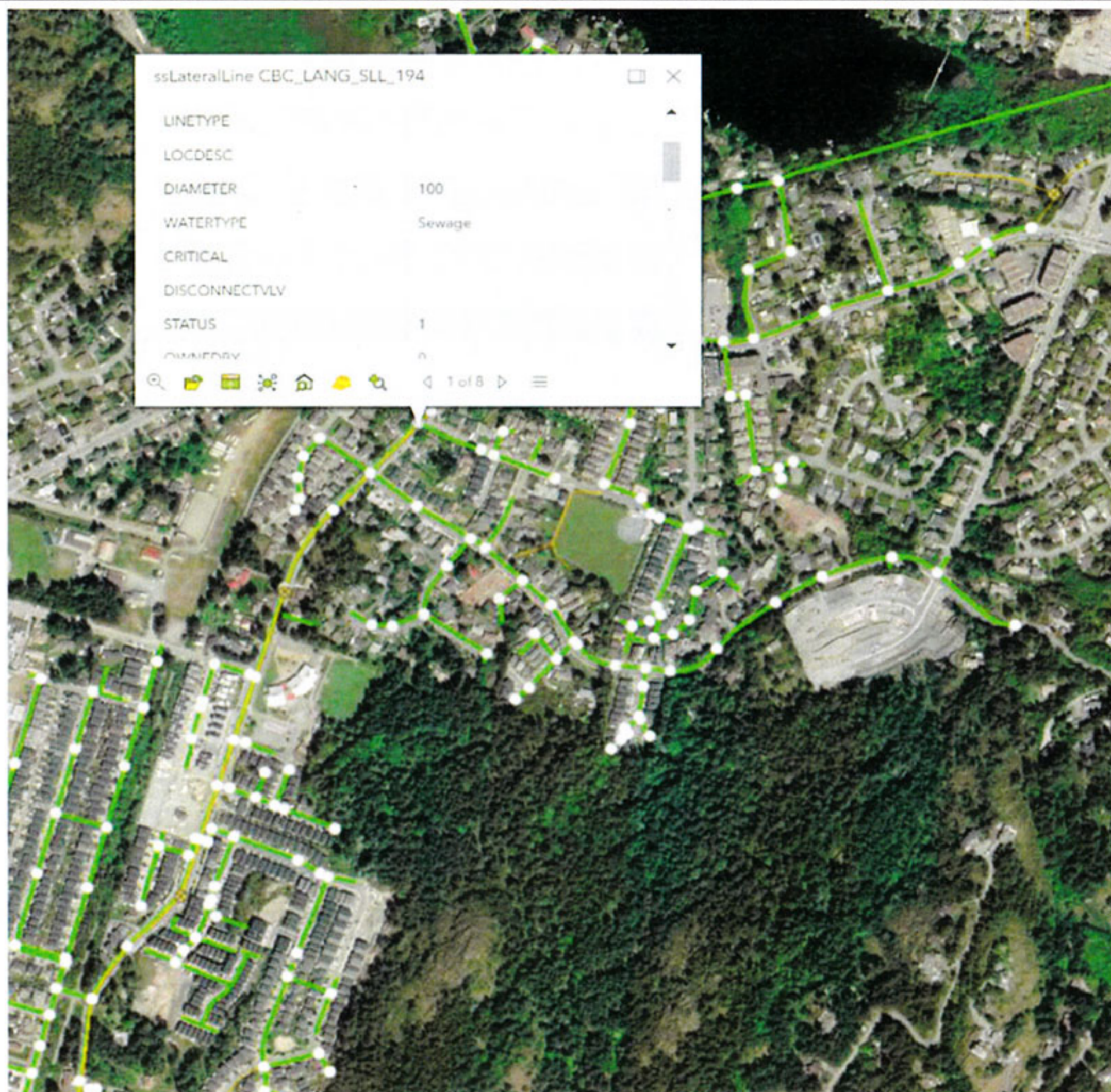




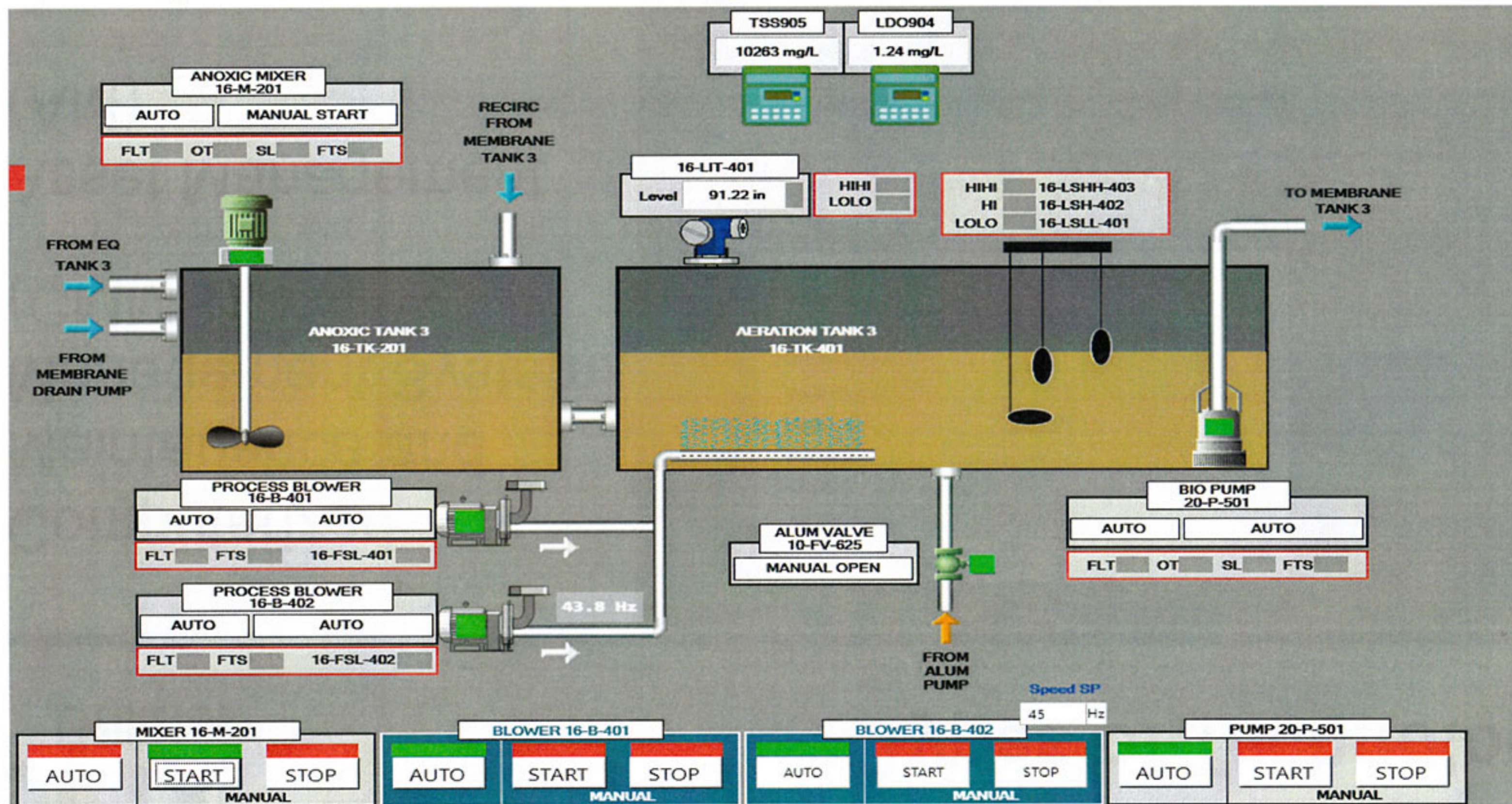
Corix leverages industry leading technologies to manage our systems, resources and information.

- ✓ Many of our operational technology platforms are turnkey
- ✓ Corix's customers benefit from our commitment to staying current as technologies evolve and improve.
- ✓ Our offerings are each selected for maximum operational efficiency based on the requirements of operational needs.

- Computerized Maintenance and Management System (CMMS)
- Asset Management (AM)
- Geographic Information System (GIS)



- Water Information Management System (WIMS)
- Supervisory Control and Data Acquisition (SCADA)
- AMR – (Automated Meter Reading) – not in use at CLE



Regulators are independent agencies of the government (Provincial and Federal)

- Governed by legislation – Water Comptrollers Office in British Columbia
- Regulator
  - Judicial powers (legally-binding Decisions) (e.g. Tariffs)
  - establishes rules and procedures (policies) as allowed under the legislation
  - Protects customer interests and allows utility to earn a fair return
  - Adjudicate on unresolved customer complaints
  - Issues Decisions (Tariffs which set rates) based on:
    - evidence presented
    - the law
    - Consideration for public policy set at all levels of government

## Operating Margin

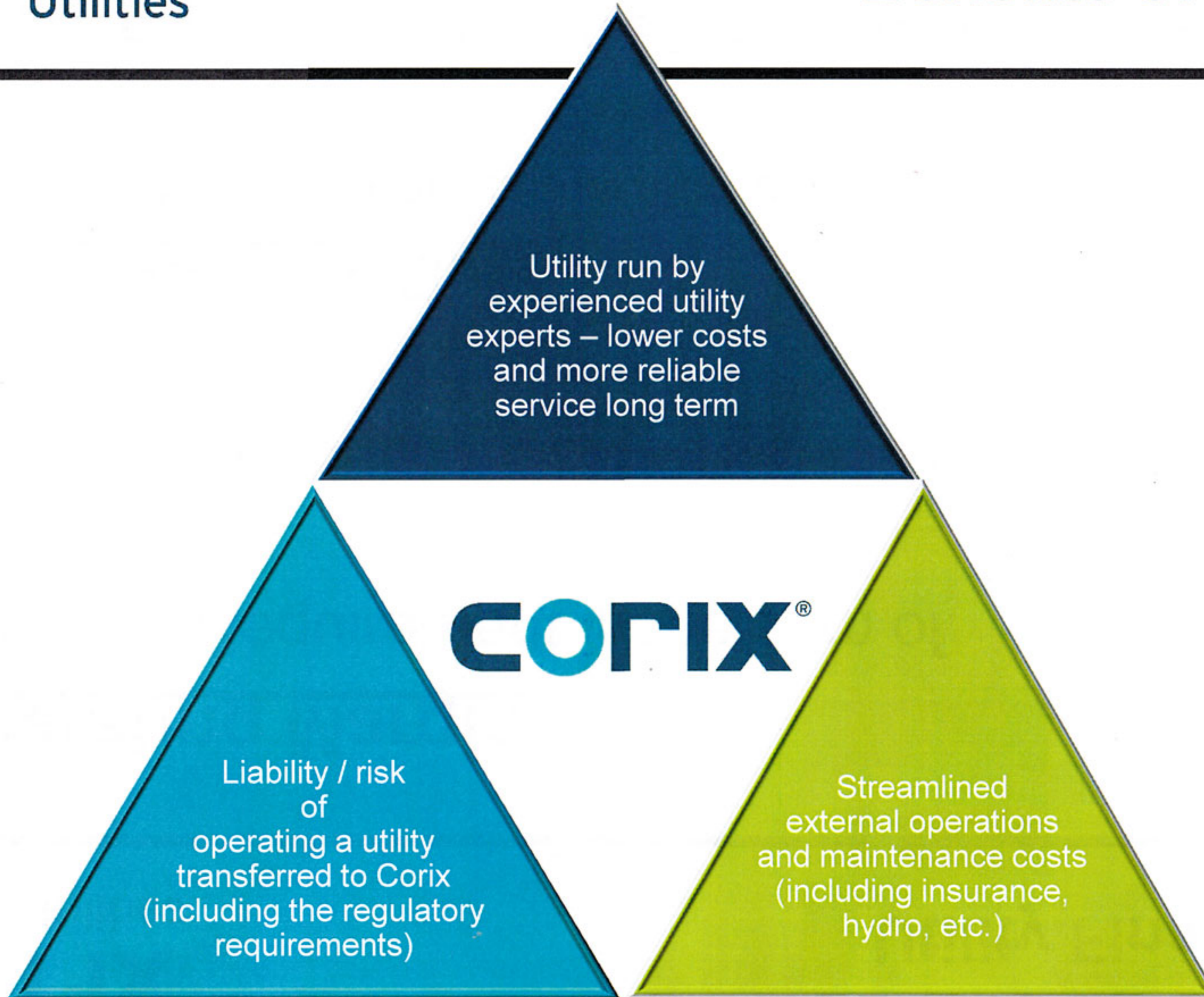
Revenue Requirement is the sum of:

**Operating Margin + O&M + Reserve Funds + Taxes**

## Return on Rate Base

Revenue Requirement is the sum of:

**Return on Rate Base + O&M + Depreciation + Taxes**





## The Year to date

- **Water System Review**
  - Installed a SCADA system at the plant – enabled the team to remove weekend attendance
  - Corix still have an operator On-Call 24/7 in case of an emergency.
- **Wastewater System**
  - Contracted a Engineer to complete an Assurance Plan
    - a requirement for the Ministry of Environment
  - Installed SCADA at the Plant – better trending and monitoring.

# Future Plans for CLE

- Water System Review
  - Contract a Engineering company to complete a Feasibility Study – target is to be 4-3-2-1-0 Compliant
  - Benefits: Fully compliant with IHA and no more Water Advisories Notices
  - Corix to invest in the utility and move to a Rate Base Model
    - Needs Water Comptroller approval – Intervener period for the community.
- Wastewater System
  - In good condition considering the age of the system
  - Some annual R&R needed
  - Need to review rates – nine different rates schedules – should be one for residential and one for commercial (if any).